



WHAT IS HIGH FIDELITY WRAPAROUND?



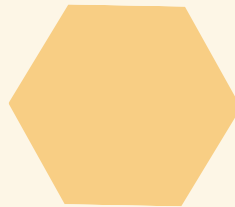
WHAT MAKES IT DIFFERENT?

High Fidelity Wraparound (HFW) is a way to organize services and supports designed to champion youth with complex needs and their families. The goal of HFW is to ensure that families have the resources they need to realize their vision for the future while keeping youth in their home and community. HFW builds upon the family's existing strengths and includes a team of the people in their lives along with professionals.



Individualized

Every family is different! HFW takes the time to get to know the family so that support and services are crafted for them.



Outcome Based

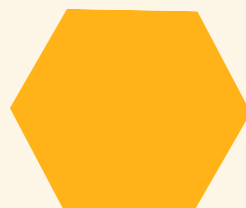
The needs the family defines are tied directly to the strategies used, this means their progress can be easily measured.

Peer Support

Both youth and caregivers who have experienced similar struggles within the behavioral health system are available to walk beside youth and families through their journey as peers, not professionals.

Strengths Based

We uplift the skill, worth, and uniqueness of each team member (including youth and family) as a tool for success.



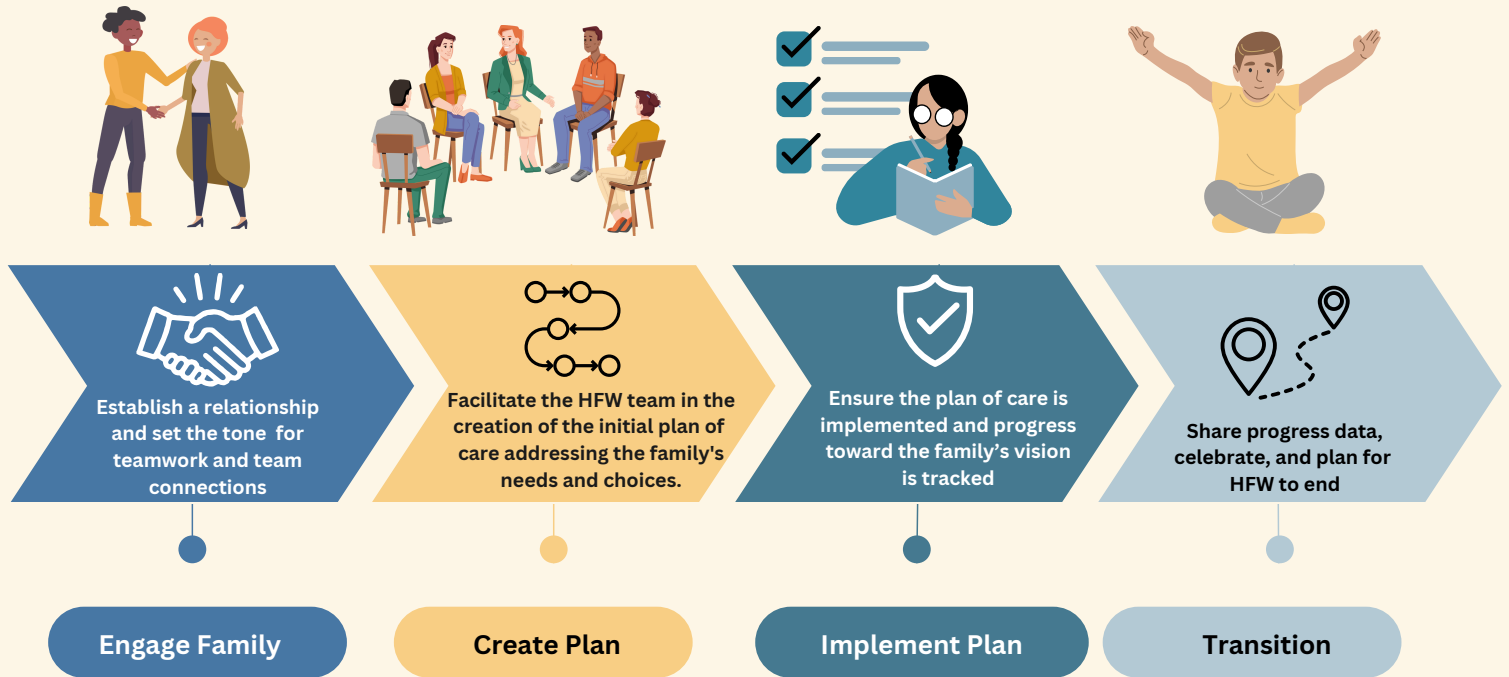
Unconditional Care

We don't give up. We use the skills of each team member to find what works best for the family no matter what.



What Does the HFW Process Look Like?

The process starts with the HFW Coordinator getting to know the family and what's going well then ends with a robust transition plan to help maintain changes after HFW ends. The four phases are summarized below.



How Will HFW Transform Care?

Research shows that youth with complex needs and their families often struggle to get the help they need to create lasting change. Other services can fail to address underlying needs and do not plan well for when services end. Families report not being heard, feeling disempowered and alone, and stuck relying on professional services to get by.

HFW is designed to meet the needs of these families. HFW has a strong research base that shows when families are driving their future, when teams are committed, when we focus on outcomes, and when we truly individualize care, youth and families see real, lasting change. Youth can remain in their home and community, have improved mental and behavioral health outcomes; and most importantly, families feel empowered to take on potential future challenges with confidence.

HFW Outcomes

Improved youth mental & behavioral health symptoms

Increased sustainable family functioning & self-efficacy

Reduced time in/out of placements (inpatient, residential, and foster care)

Reduced spending on high-cost placements like inpatient, residential

For more information on the Maine High Fidelity Wraparound Initiative email mainecoe@pcgus.com