



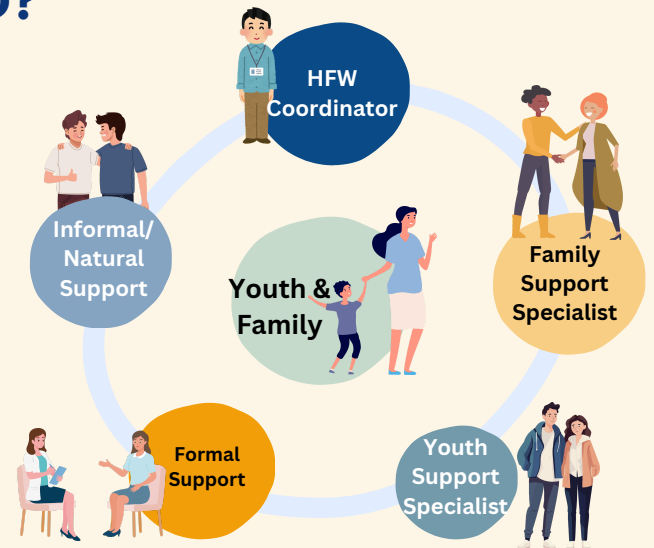
HIGH FIDELITY WRAPAROUND

Overview for Community Partners



WHAT IS HIGH FIDELITY WRAPAROUND?

High Fidelity Wraparound (HFW) is a collaborative, strengths-based planning process that aims to keep youth in their communities using a team-based support approach. It's driven by the youth and family's strengths and needs, voice and choice, and is outcome-based. HFW targets youth with complex behavioral health needs who are at risk of out-of-home placement and coordinates all necessary services and supports in one team. When done with fidelity, HFW leads to better outcomes for youth and reduced use of out-of-home placements.







Principles of Wraparound

HFW provides holistic care coordination based on the 10 Principles of Wraparound, prioritizing individualized, team-based approaches that empower families and youth in setting a vision, goals, and service needs. It includes Youth and Parent Peer Support from individuals with personal experience in behavioral health systems, as well as professional and natural supports identified by the family. Building natural support is emphasized for the family's long-term success after HFW services end.



Comparison With Other Care Coordination Services

HFW shares similar features with services like Targeted Case Management (TCM) and Behavioral Health Homes (BHH), as depicted below:

	Targeted Case Management	Behavioral Health Homes	High Fidelity Wraparound
 Team	Targeted Case Manager only	Medical Consultant, Psychiatric Consultant, Nurse, Health Home Coordinator, Peer Support, Youth Support and Family Support	Formal and informal supports, Family Support Specialist, Youth Support Specialist, led by HFW coordinator
 Focus	Mental/behavioral health needs	Integrates mental health, behavioral health and physical health needs	Underlying needs across all life domains
 Goal	Make referrals, advocate to address needs	Coordinate mental, behavioral, physical, and education supports including Primary Care	Synthesize needs across all life domains, formal and informal support strategies
 Process	Provider-led	Provider-led	Collaborative, youth/family led

Families in the BHH and TCM programs may engage in collaborative decision-making and teamwork at a high level. However, these aspects are fundamental components of HFW. HFW acknowledges the importance of both elements to achieve the best results for the youth under its care. The complex needs and situations of these youth demand more frequent communication and collaboration with the entire team, a level of support that BHH or TCM programs might not always offer.

What's new for Maine?

The past attempt to implement wraparound in Maine was missing key elements essential for success. HFW is now a supported, billable service with specific actions and steps involving the entire team. It is outcome-driven, requiring data collection to track progress. HFW includes specific actions and steps that require everyone on the team to play a part in the plan and be accountable to the family's vision, rather than hold the family alone accountable to their success. Technical assistance is provided to ensure that providers follow the model and receive high-quality training and consultation through the Center of Excellence.


HFW Outcomes



Improved youth mental & behavioral health symptoms



Increased sustainable family functioning & self-efficacy



Reduced time in/out of placements (inpatient, residential, and foster care)



Reduced spending on high-cost placements like inpatient, residential

For more information on the Maine High Fidelity Wraparound email mainecoe@pcgus.com